

# CORE-CM: Carbon Ore, Rare Earth and Critical Minerals Initiative

**Davin Bagdonas**

Research Scientist/Coal and Rare Earth Elements  
Center for Economic Geology Research  
School of Energy Resources  
University of Wyoming

2021 AGNC

6<sup>th</sup> Annual Economic Development Summit



UNIVERSITY  
OF WYOMING

School of  
Energy Resources

# CORE-CM: Carbon Ore, Rare Earth and Critical Minerals Initiative

The **University of Wyoming School of Energy Resources** is leading two CORE-CM projects that commenced September 1, 2021 – one in the **Greater Green River/Wind River Basins** and one in the **Powder River Basin**

Each project will last **two years** and will receive **~\$1.5M** in Department of Energy Funding

Cost share is provided by the **School of Energy Resources**, the **Wyoming Energy Authority**, and **Colorado School of Mines**



# CORE-CM: Carbon Ore, Rare Earth and Critical Minerals Initiative

Provide an **economic benefit** to U.S. Coal Basins by **stimulating new development** of resources centered around current **coal mining** and **related industries**.

Establish **strategic plans** to maximize the **development of potential carbon ore, rare earth elements, and critical minerals**; within the creation of **public-private partnerships**

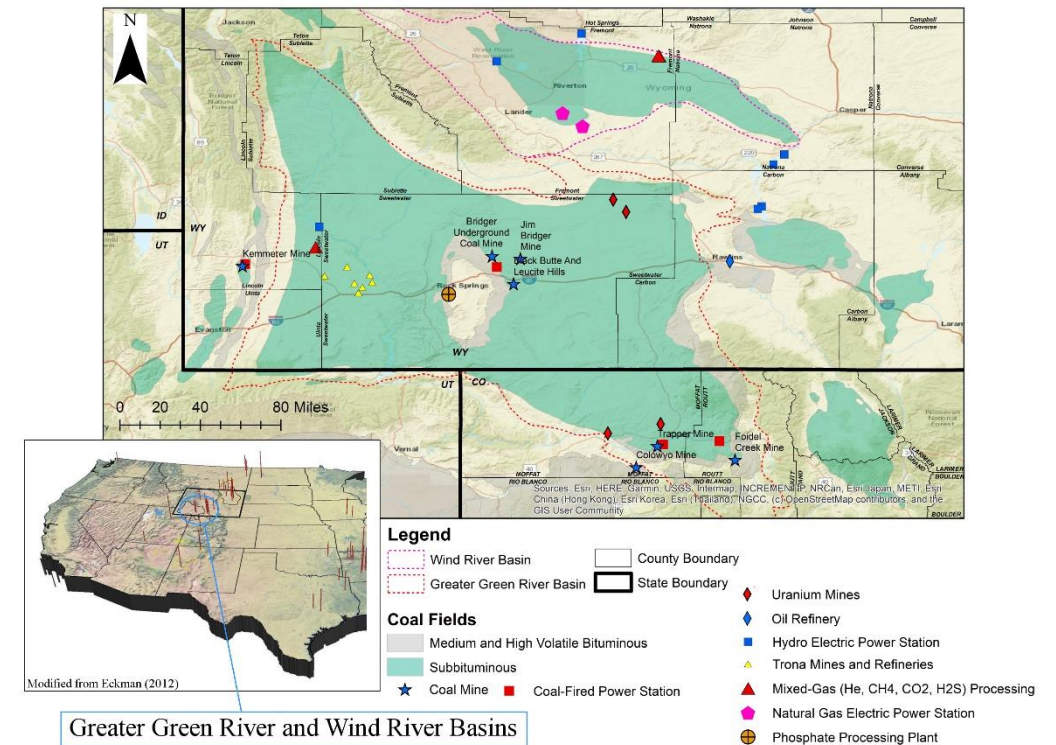
**Leverage** highly trained **workforces**, existing coal **technologies**, energy **infrastructure** in entire **supply chain development** within coal regions.

Bring together a committed **network of stakeholders**, gaining acceptance of new energy technology within coal regions and **across communities**.

# CORE-CM in the Greater Green River and Wind River Basins: Transforming and Advancing a National Coal Asset

## Objectives of CORE-CM in the Greater Green River and Wind River Basins

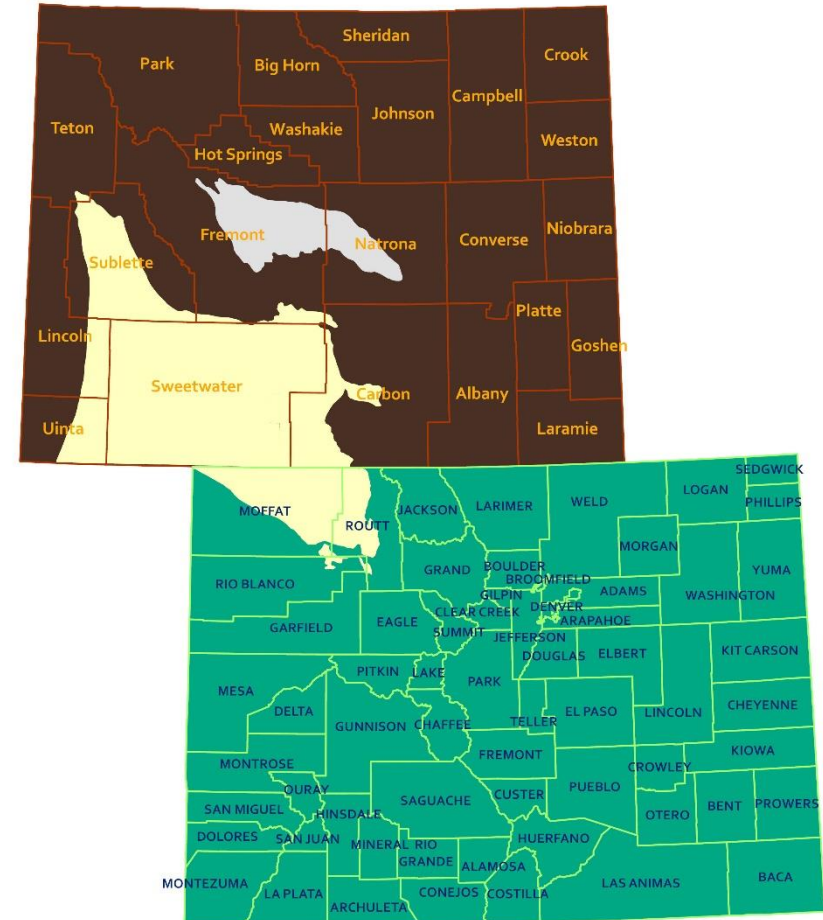
- This project will develop and catalyze regional economic growth, job creation, and associated technology innovation in The Greater Green River Basin/Wind River Basin (GGRB-WRB) of Wyoming and Colorado.
- Growth will be achieved by increasing the supply of Carbon Ore (CORE), Critical Materials (CM), and Rare Earth Elements (REE) to manufacturers of non-fuel Carbon Based Products (CBP) and products reliant upon CM.
- The project will develop a coalition team to describe what relationships, technology, infrastructure, and scientific understanding of these resources are necessary to achieve this objective.



# CORE-CM in the Greater Green River and Wind River Basins: Transforming and Advancing a National Coal Asset

## Project Team

UW School of Energy Resources; UW Center for Economic Geology Research, UW Center for Energy Regulation & Policy Analysis; UW 3D Visualization Center; UW Center for Business and Economic Analysis; Wyoming Energy Authority; Colorado School of Mines; Colorado Geological Survey; Los Alamos National Laboratory; Colorado Northwest Community College; Western Wyoming Community College; Boston Strategies International; Coalgeo, LLC; Wyoming State Geological Survey



# CORE-CM in the Greater Green River and Wind River Basins: Transforming and Advancing a National Coal Asset

## CORE-CM Tasks

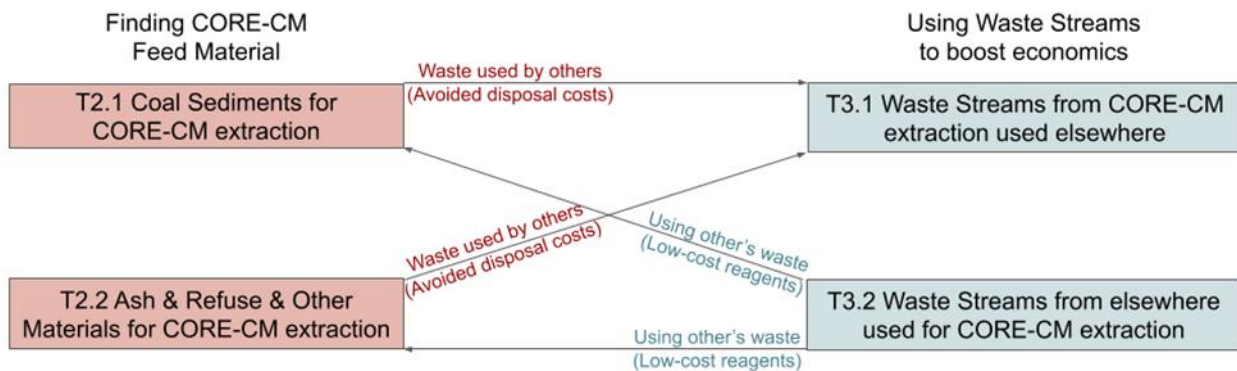
1.1 – (UW-CERPA) Summary of Environmental Justice Considerations

1.2 – (UW-CBEA) Summary of Economic Revitalization and Job Creation Outcomes

1.3 – (CSM) Environmental, Safety, and Health Analysis for Products Proposed to be Manufactured from CORE-CM Resources

2.0 – (UW-CEGR/CGS) Basinal Assessment of CORE-CM Resources

3.0 – (UW-CEGR/CSM) Basinal Strategies for Reuse of Waste Streams



# CORE-CM in the Greater Green River and Wind River Basins: Transforming and Advancing a National Coal Asset

CORE-CM Tasks continued...

4.0 – (UW-CBEA/CNCC/WWCC) Basinal Strategies for Infrastructure, Industries and Businesses

5.0 – (CSM/LANL) Technology Assessment, Development and Field Testing

6.0 – (UW-SER) Technology Innovation Centers

7.0 – (UW-SER/UW-3D VIZ CENTER/CNCC/WWCC) Stakeholder Outreach and Education



# CORE-CM in the Greater Green River and Wind River Basins: Transforming and Advancing a National Coal Asset

## **Project Partners and Stakeholders include:**

Industry, Academia, Non-profit Organizations, Economic Development Groups, National Laboratories, State Geologic Surveys, State-wide Agencies, and City and County Governments

## **Current Partners & Supporting Stakeholders:**

U.S. Congressional Delegation of Barrasso, Lummis, and Cheney; Wyoming Governors Office; Colorado State Land Board; Colorado Division of Reclamation, Mining and Safety; Wyoming Mining Association; Wyoming Representative Donald Burkhart; Wyoming Representative Mike Greear; Wyoming County Commissioners Association; Associated Governments of Northern Colorado; Wyoming Business Council; Wyoming Small Business Development Center; Impact 307; Wyoming Counties of Sweetwater, Sublette, Fremont, Carbon, and Uinta; Routt County, CO Economic Development Office; Moffat County; Kemmerer Operations, LLC; Tri-State; NTEC; Peabody Energy; PacifiCorp; Trapper Coal Mine; Colowyo Coal Mine; Black Butte Coal; Bridger Coal Company; Sweetwater Economic Development Coalition; Southwest Wyoming Manufacturing Partnership; Central Wyoming College; Mango Materials; Ur-Energy Inc.; City of Rock Springs; City of Green River; The University of Texas at Austin; Concurrent Technologies Corporation: Tetra Tech; Novex, LLC; Disa, LLC

# CORE-CM in the Greater Green River and Wind River Basins: Transforming and Advancing a National Coal Asset

**New project partners welcome!**

Please direct inquiries to Davin Bagdonas (GGRB-WRB CORE-CM Project Lead)  
[abags@uwyo.edu](mailto:abags@uwyo.edu)

and/or

Christine Reed (SER Outreach Director)  
[Christine.Reed@uwyo.edu](mailto:Christine.Reed@uwyo.edu)